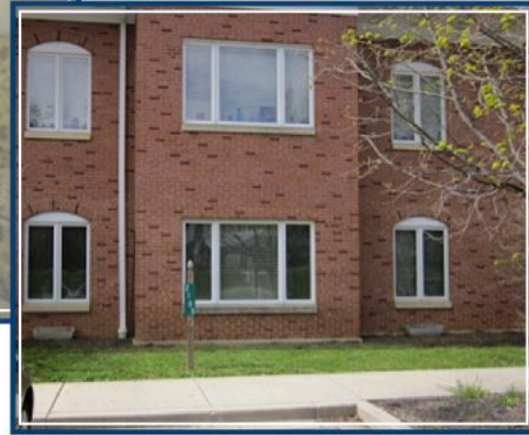
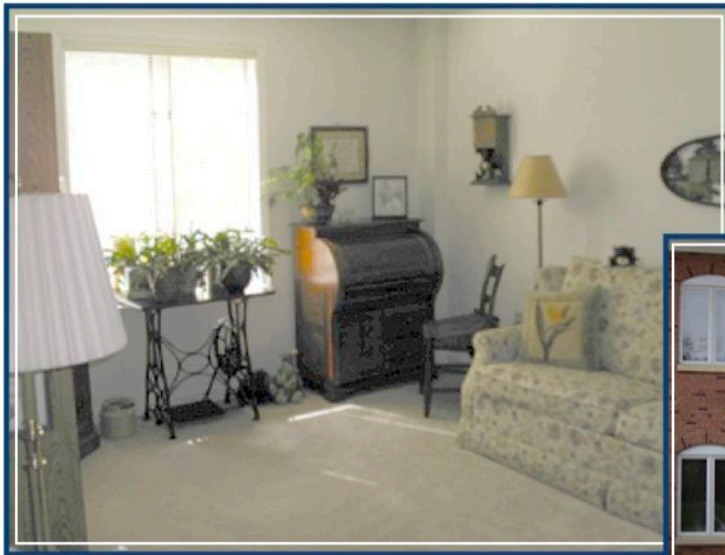




Apartment #2106 Available!

8507 Mapleville Road, Boonsboro, Maryland 21713



Generous! A generously sized apartment includes two bedrooms and two bathrooms. There is also assigned parking outside the apartment with a laundry room nearby.

Gross square feet: 1000 square feet

Entrance Fee: \$135,000.00

Monthly Fee: \$664.00

Monthly Fee includes: Standard services such as: Water, Sewer, Trash Removal, Snow Removal, Mowing, Chaplain Services, Repairs to Apartment, Appliance Repair / Replacement, Group Activities, Some Group Transportation, and Access to Nursing such as Emergency Response.

Enriching the lives of seniors.

updated 05-10-2016

Contact Deborah Haviland, Director of Marketing, at 301-671-5038 or dhaviland@fkhv.org to schedule a tour or to obtain additional residency information.